

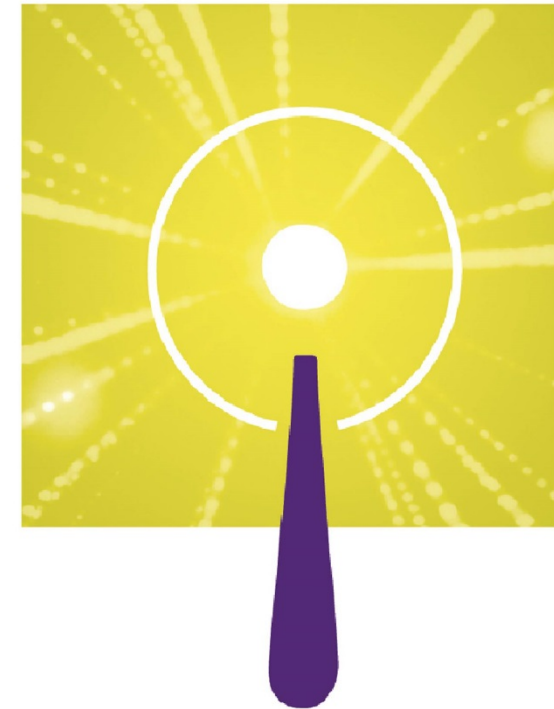
This webinar is being recorded.

Q&A Webinar

June 25, 2020 @ 3 PM EDT

Please submit your questions in the “Q&A” box
(specific questions about scientific fit will not be addressed)

NIH DIRECTOR'S
NEW INNOVATOR
AWARD



National Institutes of Health
Office of Strategic Coordination - The Common Fund

<https://commonfund.nih.gov/newinnovator>

Panelists

Ravi Basavappa, Ph.D.

Program Leader
Office of the Director

Eugene Carstea, Ph.D.

Branch Chief
Center for Scientific Review

Becky Miller, Ph.D.

Program Officer
Office of the Director

Ellie Murcia, M.Ed.

Program Specialist
Office of the Director

The Common Fund (in the NIH Office of the Director)

Current Programs:



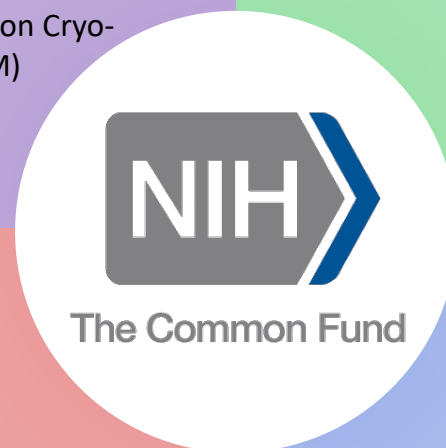
The Common Fund

Data/Tools/Methods

- Big Data to Knowledge (BD2K)
- Gabriella Miller Kids First
- Genotype-Tissue Expression (GTEx)
- Glycoscience
- Human BioMolecular Atlas Program (HuBMAP)
- Illuminating the Druggable Genome (IDG)
- Knockout Mouse Phenotyping (KOMP)
- Library of Integrated Network-Based Cellular Signatures (LINCS)
- Metabolomics
- Regenerative Medicine Program (RMP)
- Science of Behavior Change (SOBS)
- Somatic Cell Genome Editing (SCGE)
- Stimulating Peripheral Activity to Relieve Conditions (SPARC)
- Transformative High Resolution Cryo-Electron Microscopy (CryoEM)

New Types of Clinical Partnerships

- Acute to Chronic Pain Signatures (A2CPS)
- Global Health
- HCS Research Collaboratory
- Undiagnosed Diseases Network (UDN)



New Paradigms

- 4D Nucleome (4DN)
- Extracellular RNA Communication (exRNA)
- Molecular Transducers of Physical Activity Consortium (MoTrPAC)

Transformative Workforce Support

- Enhancing the Diversity of the NIH-Funded Workforce (DPC/BUILD)
- High-Risk, High-Reward Research Program
 - Pioneer Award
 - New Innovator Award
 - Transformative Research Award
 - Early Independence Award
- Strengthening the Biomedical Research Workforce (BEST)

The Common Fund (in the NIH Office of the Director)

Current Programs:



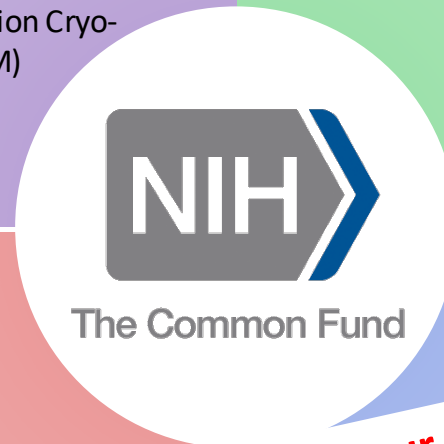
The Common Fund

Data/Tools/Methods

- Big Data to Knowledge (BD2K)
- Gabriella Miller Kids First
- Genotype-Tissue Expression (GTEx)
- Glycoscience
- Human BioMolecular Atlas Program (HuBMAP)
- Illuminating the Druggable Genome (IDG)
- Knockout Mouse Phenotyping (KOMP)
- Library of Integrated Network-Based Cellular Signatures (LINCS)
- Metabolomics
- Regenerative Medicine Program (RMP)
- Science of Behavior Change (SOBS)
- Somatic Cell Genome Editing (SCGE)
- Stimulating Peripheral Activity to Relieve Conditions (SPARC)
- Transformative High Resolution Cryo-Electron Microscopy (CryoEM)

New Types of Clinical Partnerships

- Acute to Chronic Pain Signatures (A2CPS)
- Global Health
- HCS Research Collaboratory
- Undiagnosed Diseases Network (UDN)



New Paradigms

- 4D Nucleome (4DN)
- Extracellular RNA Communication (exRNA)
- Molecular Transducers of Physical Activity (MTPA)

Translational and Career Development Workforce Support

- Diversity of the NIH-Funded Workforce (DPC/BUILD)
- Research Career Development Program
- Career Award
- New Innovator Award
- Transformative Research Award
- Early Independence Award
- Strengthening the Biomedical Research Workforce (BEST)

**CF programs may be useful for your research:
FOAs, access to high-end instruments, databases,
reagents, protocols,**

The Common Fund (in the NIH Office of the Director)

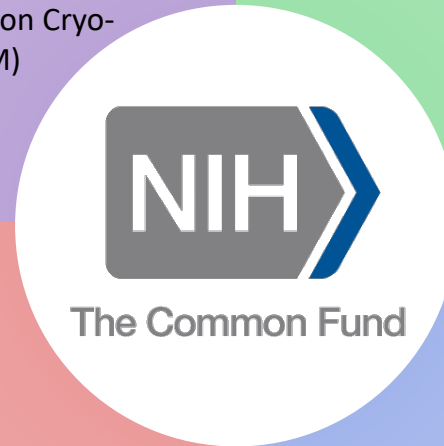
Current Programs:



The Common Fund

Data/Tools/Methods

- Big Data to Knowledge (BD2K)
- Gabriella Miller Kids First
- Genotype-Tissue Expression (GTEx)
- Glycoscience
- Human BioMolecular Atlas Program (HuBMAP)
- Illuminating the Druggable Genome (IDG)
- Knockout Mouse Phenotyping (KOMP)
- Library of Integrated Network-Based Cellular Signatures (LINCS)
- Metabolomics
- Regenerative Medicine Program (RMP)
- Science of Behavior Change (SOBS)
- Somatic Cell Genome Editing (SCGE)
- Stimulating Peripheral Activity to Relieve Conditions (SPARC)
- Transformative High Resolution Cryo-Electron Microscopy (CryoEM)



New Types of Clinical Partnerships

- Acute to Chronic Pain Signatures (A2CPS)
- Global Health
- HCS Research Collaboratory
- Undiagnosed Diseases Network (UDN)

New Paradigms

- 4D Nucleome (4DN)
- Extracellular RNA Communication (exRNA)
- Molecular Transducers of Physical Activity Consortium (MoTrPAC)

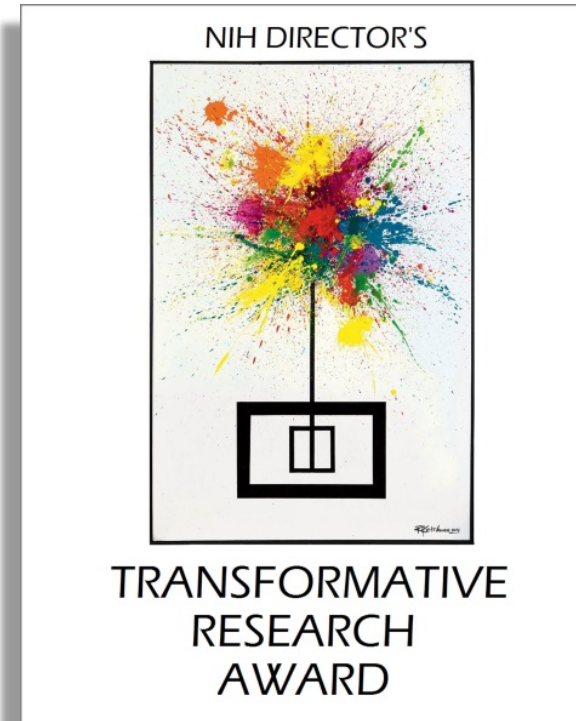
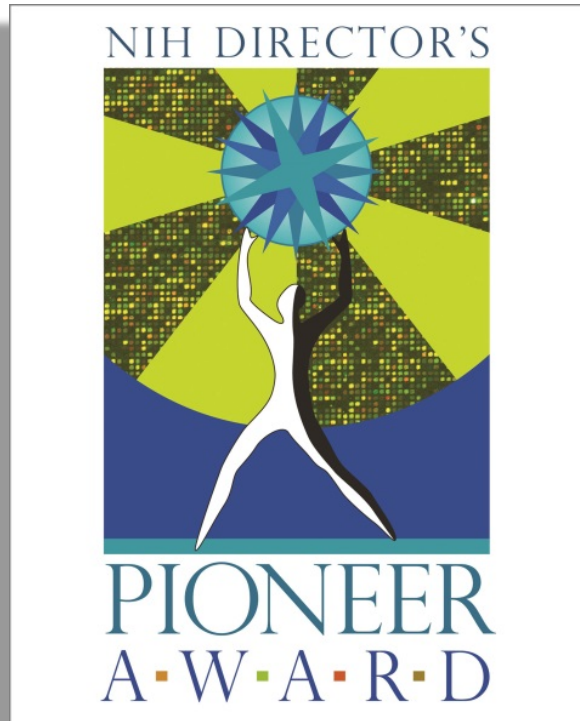
Transformative Workforce Support

- Enhancing the Diversity of the NIH-Funded Workforce (DPC/BUILD)
- High-Risk, High-Reward Research Program
 - Pioneer Award
 - New Innovator Award
 - Transformative Research Award
 - Early Independence Award
- Strengthening the Biomedical Research Workforce (BEST)

High-Risk, High-Reward Research Program



The Common Fund

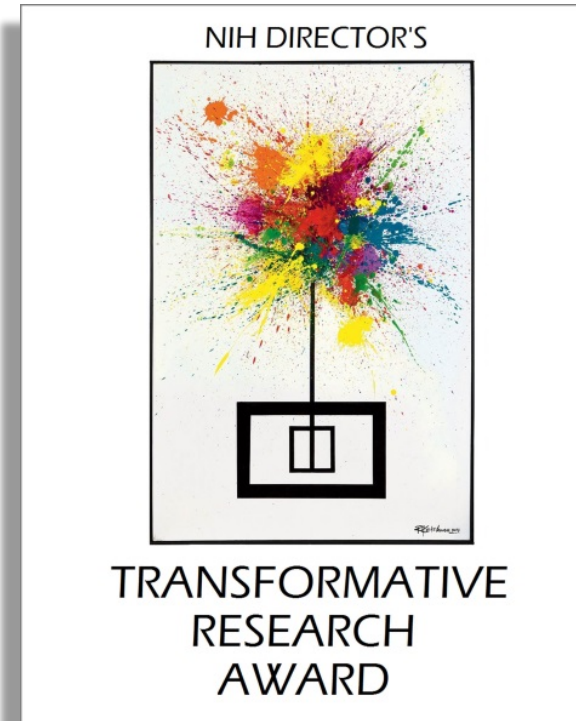
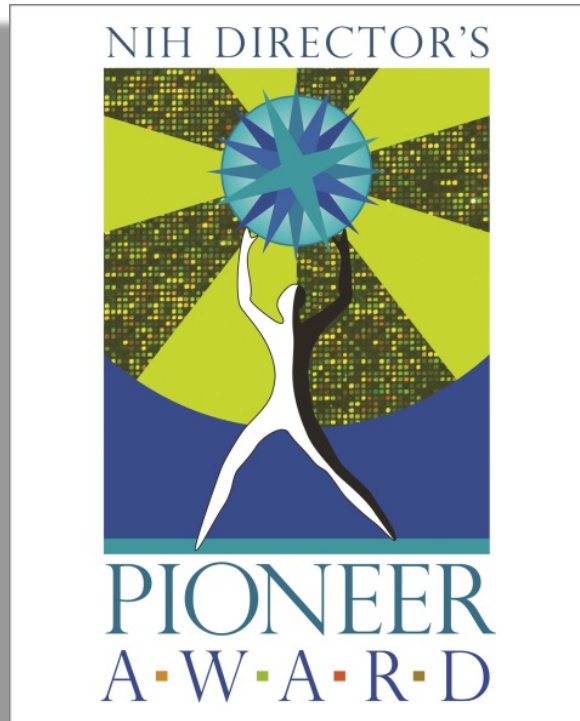


Annual funding opportunities

High-Risk, High-Reward Research Program



The Common Fund

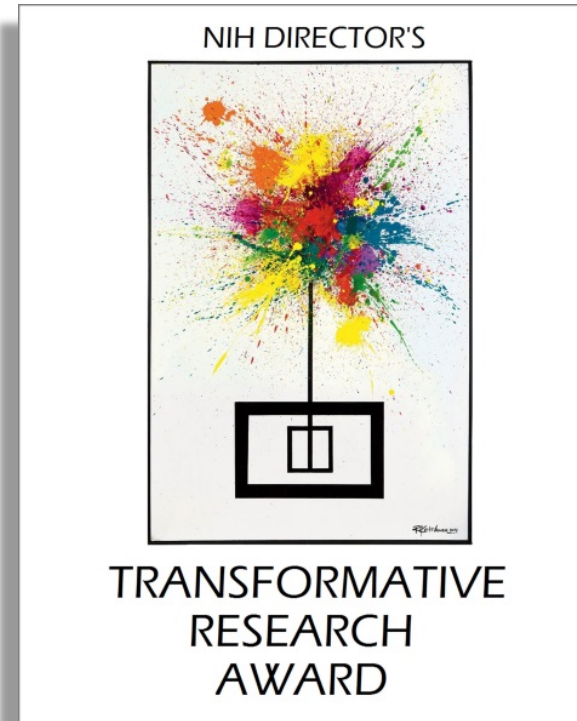
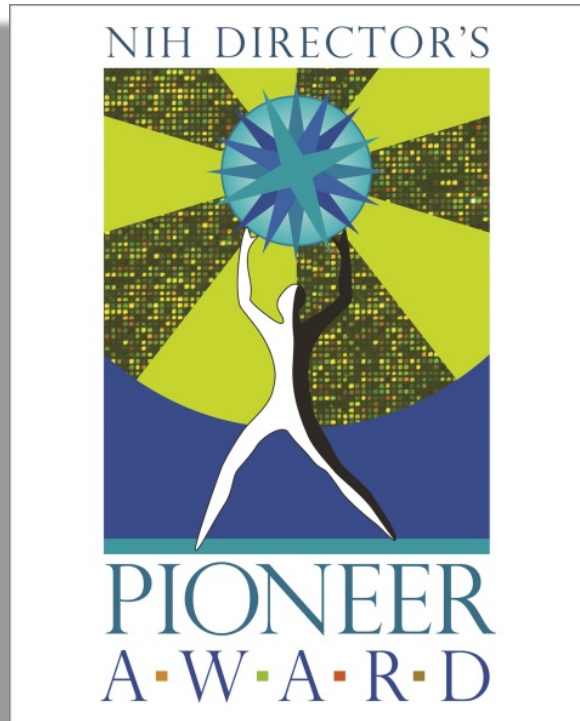


High-risk, high-impact ideas

High-Risk, High-Reward Research Program



The Common Fund

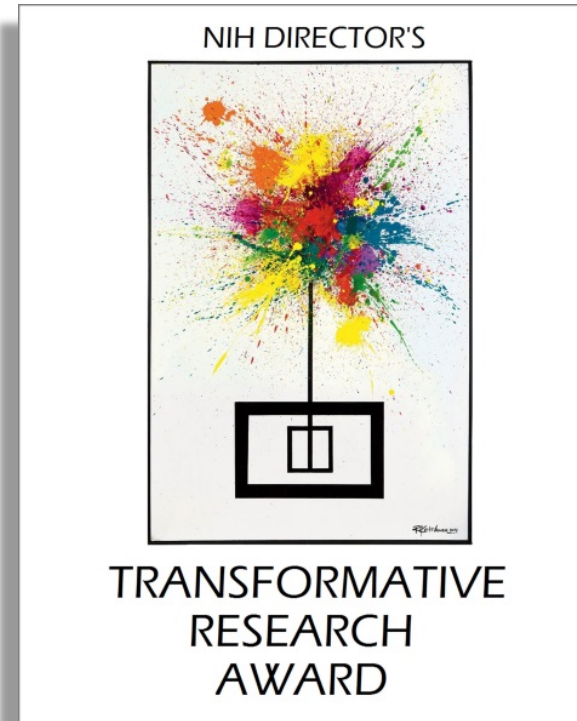
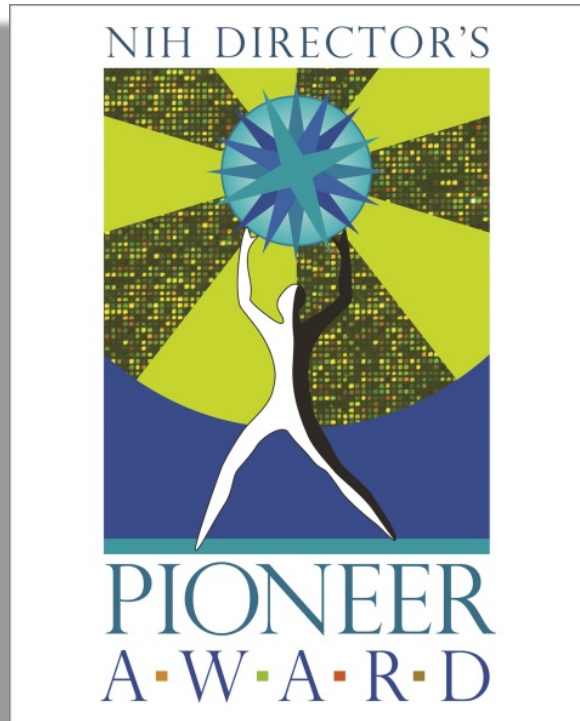


No preliminary data or detailed experimental plan required

High-Risk, High-Reward Research Program



The Common Fund

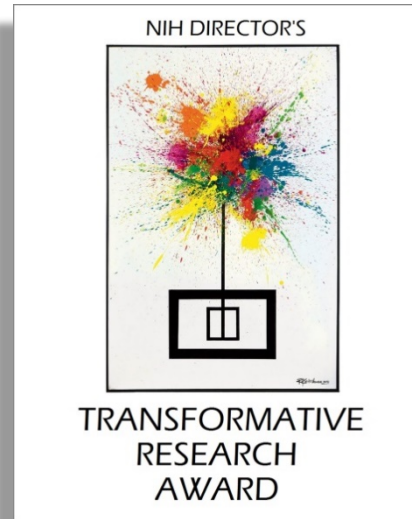
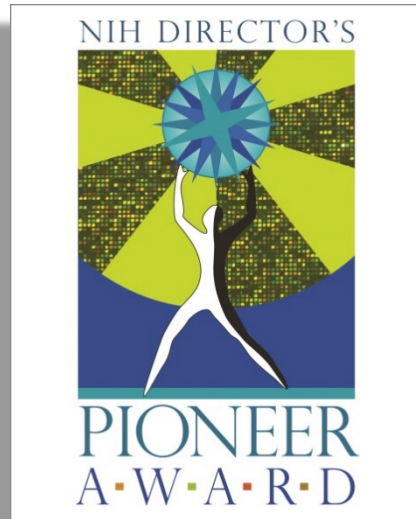


Any topic relevant to NIH mission

High-Risk, High-Reward Research Program



The Common Fund

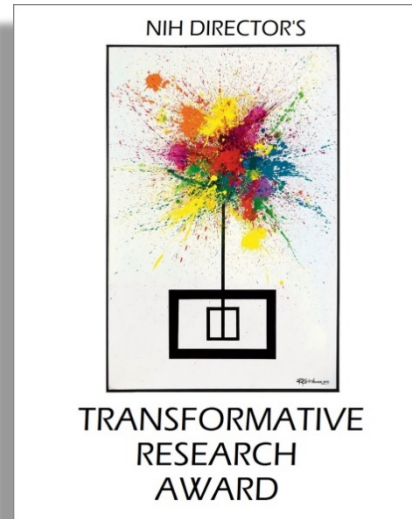
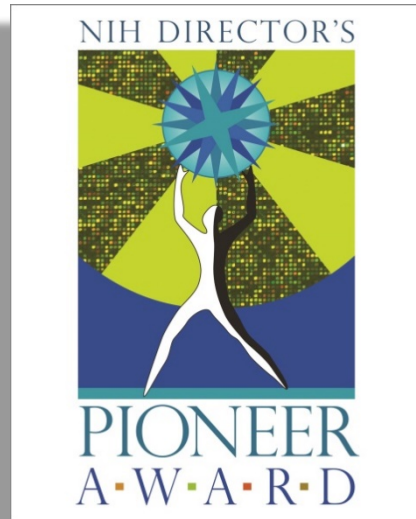


Any topic relevant to NIH mission, including:
behavioral, social, biomedical, applied, and formal sciences,
and basic, translational, or clinical research

High-Risk, High-Reward Research Program



The Common Fund



Encourages applications from investigators with diverse backgrounds and from the full spectrum of eligible institutions

High-Risk, High-Reward Research Program



The Common Fund

Chair

James M. Anderson, MD, PhD
OD

Program Leader

Ravi Basavappa, PhD
OSC/DPCPSI/OD

Members

Kristin Abraham, PhD
NIDDK

Vernon Anderson, PhD
NIGMS

Hugh Auchincloss, MD
NIAID

David Balshaw, PhD
NIEHS

Abraham P. Bautista, PhD
NIAAA

Eugene Carstea, PhD
CSR

Robert H Carter, MD
NIAMS

Jennifer Collins, MR
NIEHS

Christine Colvis, PhD
NCATS

Judith A. Cooper, PhD
NIDCD

**Milton Corn, MD, FACP,
FACMI**
NLM

Cindy D. Davis, PhD
Office of Dietary
Supplements/DPCPSI/OD

Emmeline Edwards, PhD
NCCIH

Zeynep Erim, PhD
NIBIB

Rene Etcheberrigaray, MD
NIA

Valerie Florance, PhD
NLM

Gabriel Hidalgo
NIDCR

Christine Hunter, PhD, ABPP
OBSSR/DPCPSI/OD

Raymond Jacobson, PhD
CSR

Flora Katz, PhD
FIC

Karen Kellton
OSC/DPCPSI/OD

Anthony Kirilusha, PhD
NIAMS

Susan Koester, PhD
NIMH

Rajiv Kumar, PhD
CSR

James Li, PhD
CSR

Roger Little, PhD
NIDA

James Mack, PhD
CSR

Judy A. Mietz, PhD
NCI

Becky Miller, PhD
OSC/DPCPSI/OD

Brett Miller, PhD
NICHD

Daniel Miller, PhD
NINDS

Michael Morse
OSC/DPCPSI/OD

Ellie Murcia, MEd
OSC/DPCPSI/OD

Srikanth Ranganathan, PhD
CSR

Diana (Dede) Rutberg, MBA
NIDCR

Suzanne Ryan, PhD
CSR

John Satterlee, PhD
NIDA

Carol Shreffler, PhD
NIEHS

Lillian Shum, PhD
NIDCR

Darren Sledjeski, PhD
NIDCR

Heidi J. Sofia, PhD
NHGRI

Michael A. Steinmetz, PhD
NEI

**Nathaniel Stinson, Jr., PhD,
MD**
NIMHD

Edmund Talley, PhD
NINDS

**Stephanie Johnson Webb,
PhD**
NHLBI

Tasmeen Weik, DrPH, MPH
CSR

Elizabeth L. Wilder, PhD
OSC/DPCPSI/OD



Supports unusually creative early career investigators proposing innovative, high-impact research

- Started in 2007
- Early Stage Investigator (no substantial NIH grant and within 10 years of doctoral degree or clinical training)
- Commit 25% research effort
- Awards of \$1.5 million disbursed in first year of 5 year project period
- Uses DP2 activity code

New Innovator Award - application



The Common Fund

Follow instructions in SF424 application guide unless specific guidance is provided in the FOA

Specific Aims Page	Do not use
Research Strategy Essay	10 pages (primary component of the application; see later slide for more information)
Biosketch	Only PI's biosketch allowed
Bibliography & References Cited	Do not use; include essential in references in Essay and within 10 page limit
Budget	No detailed budget allowed (indicate only \$1.5M)
Equipment	Do not use
Letters of support	Do not use
Resource Sharing Plan	Do not use; will be requested as Just-in-Time information
Other components/forms	Use when appropriate, such as Authentication of Key Biol./Chem. Resources; Vertebrate Animals; Human Subjects; Biohazards

New Innovator Award - application



The Common Fund

Follow instructions in SF424 application guide unless specific guidance is provided in the FOA

Specific Aims Page	Do not use
Research Strategy Essay	10 pages (primary component of the application; see later slide for more information)
Biosketch	Only PI's biosketch allowed
Bibliography & References Cited	Do not use; include essential in references in Essay and within 10 page-limit
Budget	No detailed budget allowed (indicate only \$1.5M)
Equipment	Do not use
Letters of support	Do not use
Resource Sharing Plan	Do not use; will be requested as Just-in-Time information
Other components/forms	Use when appropriate, such as Authentication of Key Biol./Chem. Resources; Vertebrate Animals; Human Subjects; Biohazards

In 10 pages, use the following headings or subsections:

- ***Project science areas*** – 1 digit code and abbreviation for primary and secondary areas
- ***Project Description*** – Describe scientific importance of topic; overall approach to be taken; preliminary data not required, but accepted; state that to comply with the FOA, a detailed experimental plan and extensive are not being provided; however, provide sufficient evidence that proposal has been deeply considered and will be pursued in a robust and rigorous manner
- ***Innovativeness*** – Provide argument of why proposal is exceptionally innovative
- ***Investigator qualifications*** – Support your claim of innovativeness in prior research
- ***Suitability for the New Innovator Award program*** – Describe why proposal is “HRHR”
- ***Statement of research effort commitment*** – State will commit at least 25% research effort toward project
- ***Bibliography/citations*** – Include critical citations; may be in an abbreviated form as long as identifier is unique

Points to consider:

- Given review process used, be sure that what you write can be easily appreciated by people well outside the field for exceptional innovation and potential for unusually broad impact
- May be helpful to begin with a description of the landscape of the field and current state-of-the-art or boundaries; provide proper context for proposal and why it is so innovative and potentially impactful
- Ease the reader into the jargon of the field
- Though no data or detailed experimental plan are required, convince the reviewer that you have thought deeply about the project – identify risky aspects, how they will be mitigated, alternate approaches
- Also, convince the reviewer that the research will be performed in a robust and rigorous manner – validate new approaches, provide estimates of numbers of human or animal subjects (if used) and why, include that sex will be considered as a biological variable (if appropriate)



**Center for
Scientific Review**

NIH Director's New Innovator Award (DP2)

Gene Carstea, PhD

Scientific Review Officer, New Innovator Award Review

Chief, Cardiovascular and Respiratory Sciences (CVRS) IRG

CSR, NIH

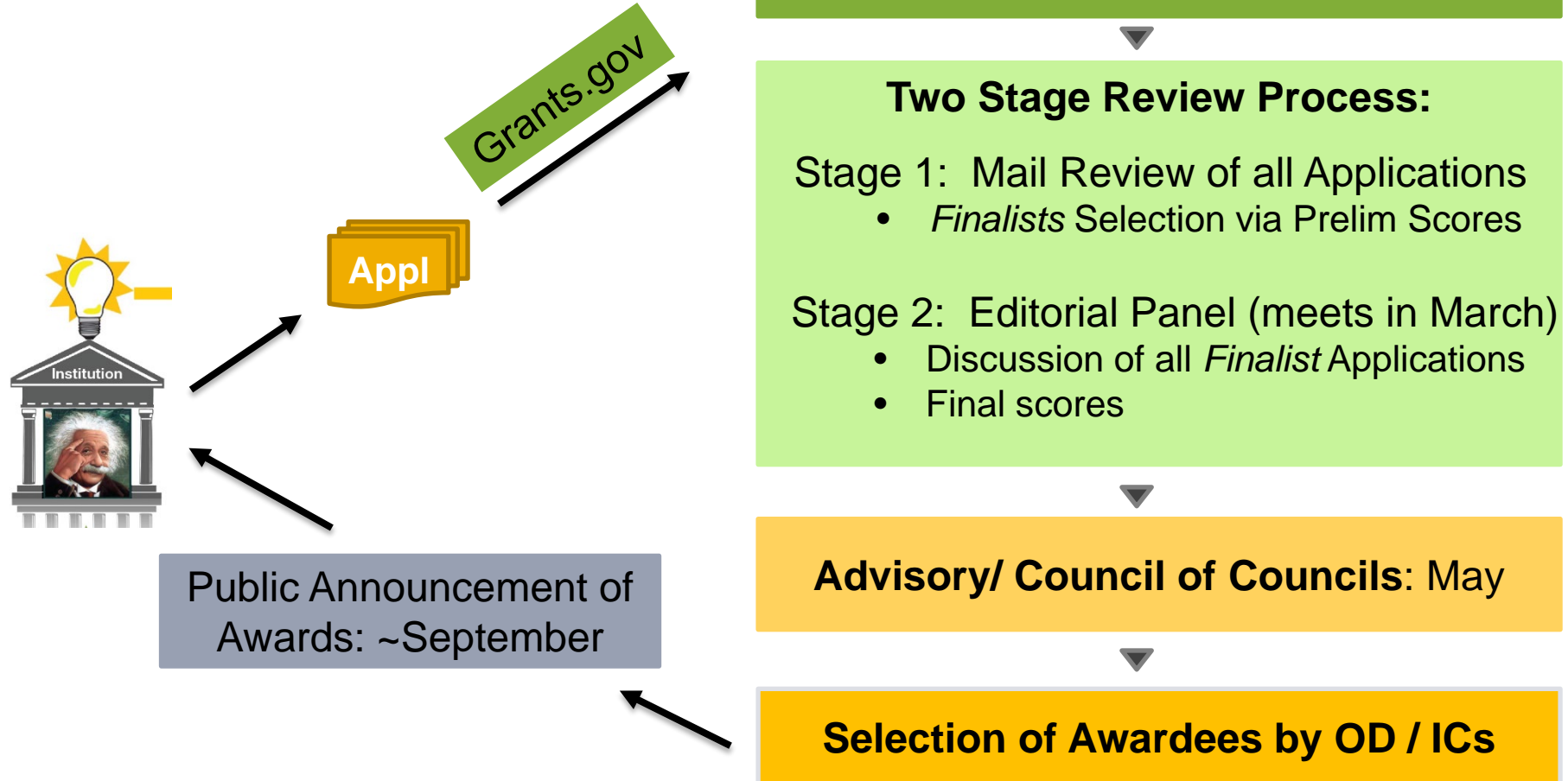
2020-21 Webinar

June 25, 2020





New Innovator Award Review Process





Peer-Review Process – Pre-Stage 1

- All applications are assigned to one panel
 - located within the *Cardiovascular and Respiratory Sciences (CVRS)* IRG
- Administrative Review: A check for completeness and ESI eligibility
- Applications are grouped based on areas of science, as identified by applicant
- Potential *Conflicts of Interest* will be considered for each application
 - e.g., Institutional, Collaborative, etc.
- *Mail Reviewers* will be recruited to cover all representative areas of science



Peer-Review Process: Stage 1 (Mail Reviews)

Recruit Panel of Mail Reviewers



Match Reviewers with Science



3 Reviewers / Application



Evaluation: 3 Criteria and an Overall Impact Score (1-9)

1. "Importance and Potential Impact of the Scientific Problem"
2. "Novelty / Innovativeness of Approach"
3. "Creative Potential of ESI"

Overall Impact Paragraph



Selection of Finalists for Stage 2

- ✓ Selection based on Rank Score order by Mail reviewers
 - Overall Impact Scores

- ✓ Unbiased selection of applications by Editorial reviewers
 - Combination of Scores and Impact statements

In total: Approx. 20% of all submitted applications will advance to Stage 2



Stage 2: Editorial Review



- “Editorial board” consisting of ~25 panelists
 - senior members of the scientific community
 - experts with broad scientific understanding
- Each finalist application is assigned to 3 Editor/Reviewers
 - all finalist applications will be discussed
- Scoring is focused on *Impact & Innovation*
- Each assigned Editor/Reviewer provides an impact statement and impact score
- Release of final scores and Summary Statements (for all)
 - Discussed statements: will receive 2nd stage impact statements with resume and summary of discussion
 - Non-discussed statements: will receive 1st stage critiques



Questions about the Review process

Contact:

Gene Carstea SRO, New Innovator Award
Chief, CVRS IRG

301-827-3384; carsteae@csr.nih.gov

This webinar is being recorded.

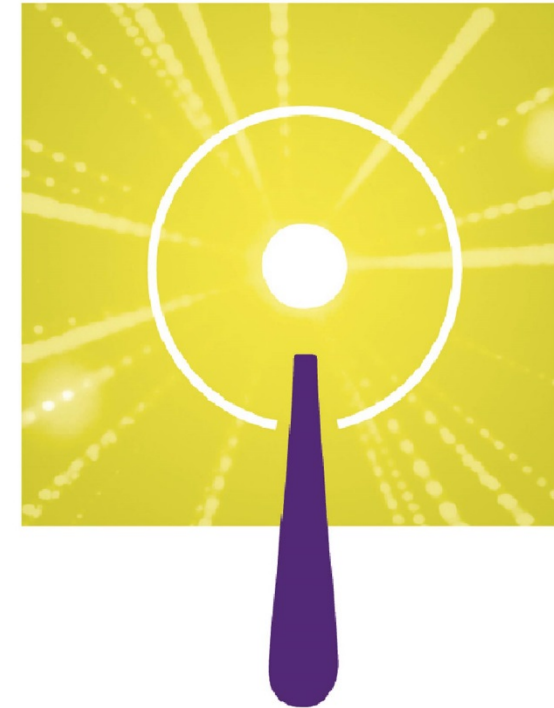
Q&A Webinar

June 25, 2020 @ 3 PM EDT

Please submit your questions in the “Q&A” box
(scientific inquiries will not be discussed)

Eligibility

NIH DIRECTOR'S
NEW INNOVATOR
AWARD



National Institutes of Health
Office of Strategic Coordination - The Common Fund

<https://commonfund.nih.gov/newinnovator>

This webinar is being recorded.

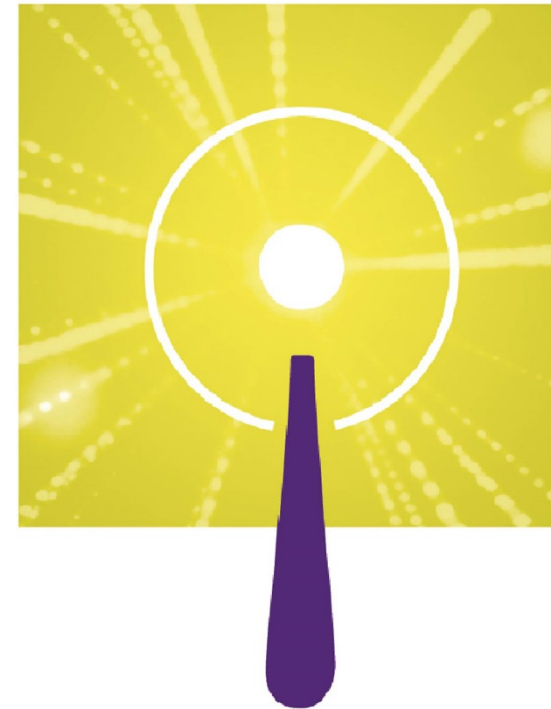
Q&A Webinar

June 25, 2020 @ 3 PM EDT

Please submit your questions in the “Q&A” box
(scientific inquiries will not be discussed)

Application & Submission

NIH DIRECTOR'S
NEW INNOVATOR
AWARD



National Institutes of Health
Office of Strategic Coordination - The Common Fund

<https://commonfund.nih.gov/newinnovator>

This webinar is being recorded.

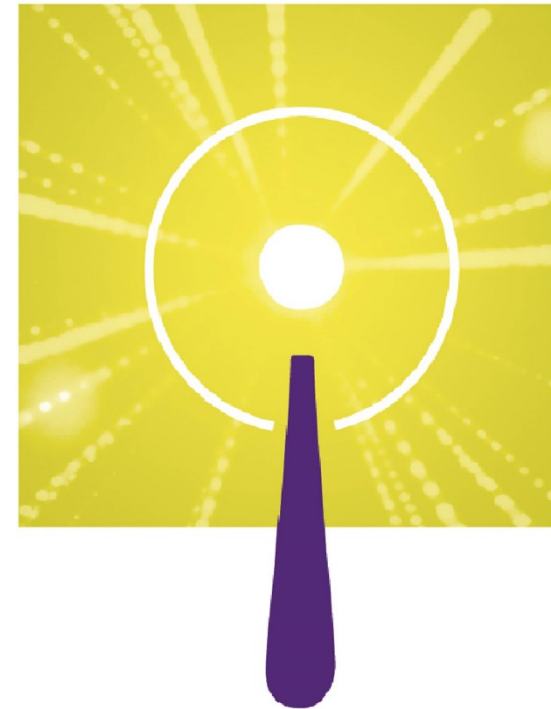
Q&A Webinar

June 25, 2020 @ 3 PM EDT

Please submit your questions in the “Q&A” box
(scientific inquiries will not be discussed)

Budget

NIH DIRECTOR'S
NEW INNOVATOR
AWARD



National Institutes of Health
Office of Strategic Coordination - The Common Fund

<https://commonfund.nih.gov/newinnovator>

This webinar is being recorded.

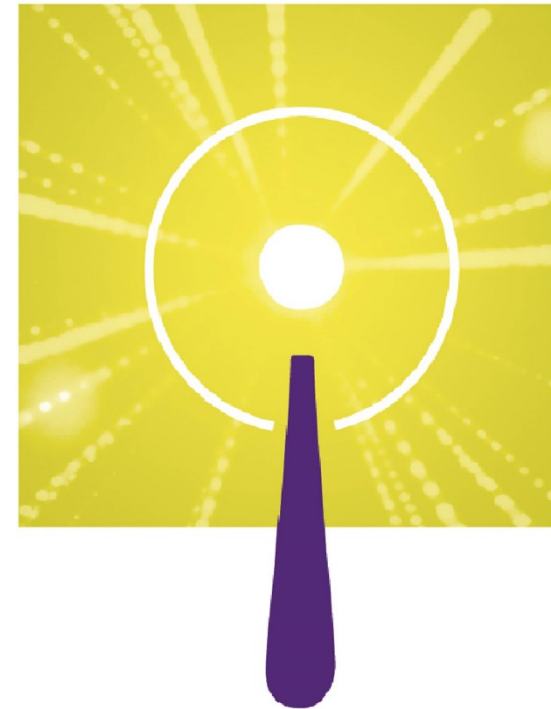
Q&A Webinar

June 25, 2020 @ 3 PM EDT

Please submit your questions in the “Q&A” box
(scientific inquiries will not be discussed)

Review

NIH DIRECTOR'S
NEW INNOVATOR
AWARD



National Institutes of Health
Office of Strategic Coordination - The Common Fund

<https://commonfund.nih.gov/newinnovator>

This webinar is being recorded.

Q&A Webinar

June 25, 2020 @ 3 PM EDT

Thank you for attending.

A recording of this webinar will be made available on <https://commonfund.nih.gov/newinnovator>.

If you have additional questions, email us at newinnovator@mail.nih.gov.



National Institutes of Health
Office of Strategic Coordination - The Common Fund

<https://commonfund.nih.gov/newinnovator>